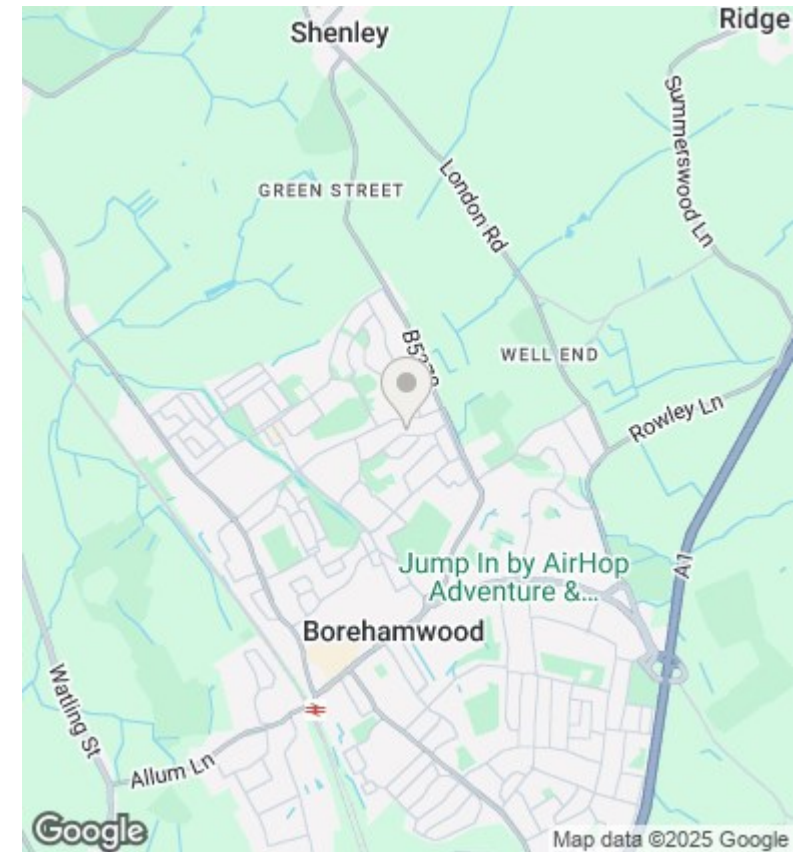
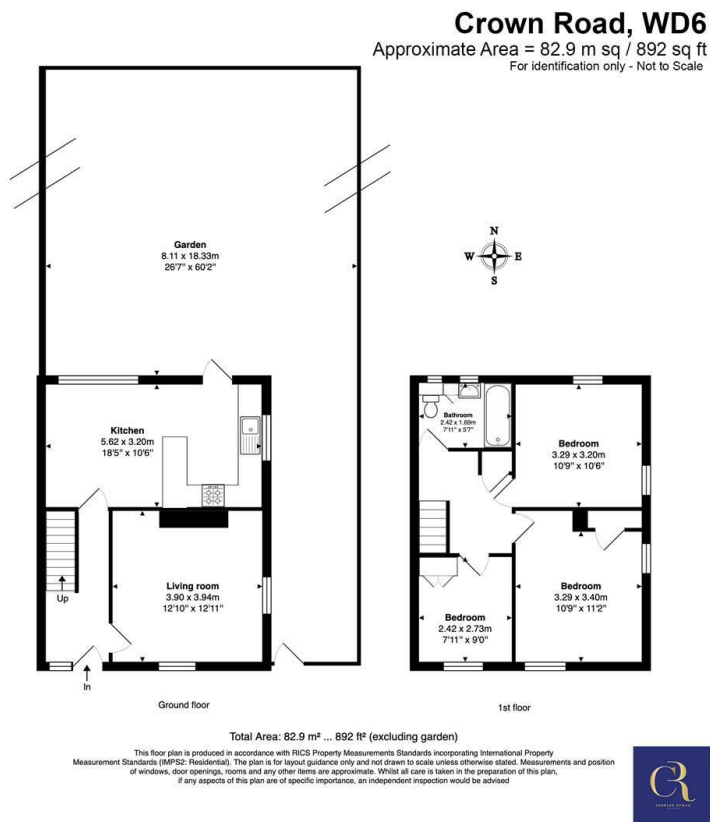




## Crown Road, Borehamwood

Guide price £475,000

- Semi Detached House
- Bathroom
- Potential to extend (subject to planning)
- Early Viewings Recommended
- 3 Bedrooms
- Private rear garden
- Close to local schools
- Lounge/Dining Room
- Off street parking
- No Chain



## Directions

Borehamwood offers excellent transport links by local roads, easy access to the A1 and M25. Local bus routes and Elstree & Borehamwood rail station offers the Thameslink service into central London and northbound towards Luton Airport. There is a plethora of primary and secondary schools in the area. Shenley Road offers an abundance of local shops and there is a large Tesco nearby.

## Viewings

Viewings by arrangement only. Call +44 20 3300 3550 to make an appointment.

## Council Tax Band

D

## EPC Rating:

D

Energy Efficiency Rating		
	Current	Potential
Very energy efficient - lower running costs		
(92-plus) <b>A</b>		
(81-91) <b>B</b>		
(69-80) <b>C</b>		69
(55-68) <b>D</b>	56	
(39-54) <b>E</b>		
(21-38) <b>F</b>		
(1-20) <b>G</b>		
Not energy efficient - higher running costs		
<b>England &amp; Wales</b>	EU Directive 2002/91/EC	